

Camp Sagawau

Cal-Sag Channel

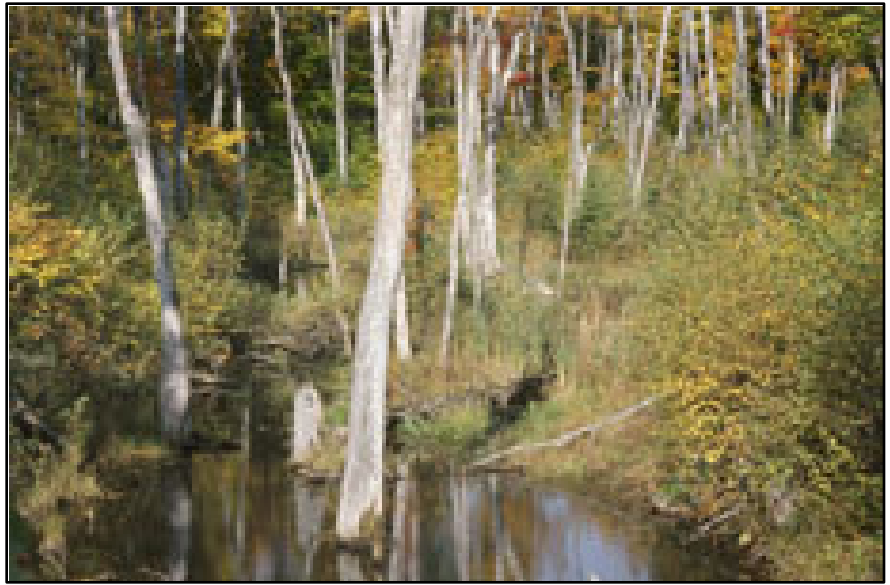
Address or Nearest Intersection:

Route 83 and 111th St., Lemont, IL

Directions: 100 yards east of Archer Ave. (171) and Rt. 83.

Owner: Forest Preserve District of Cook County. Accessible **only** by appointment and accompanied by a Camp Sagawau naturalist, this can be arranged by Friends of the Chicago River.

Habitat Description: Forested site with a wonderful education center. Great for migratory birds. Home of the only canyon in the region. The canyon creek flows into the Cal-Sag Channel.



Photo, FPDCC

Access to water: Camp Sagawau naturalists will direct you to the creek access. There is access at the top and bottom of the canyon. Hiking to the bottom of the canyon is difficult and steep.

Amenities: Port-a-Potties available. Lawn available for lunch.

Parking: Parking lot

Capacity: 60 students

