

Elizabeth Conkey Woods

Tinley Creek (flows to the Cal-Sag Channel)

Address or Nearest Intersection: 135th St. and Central Ave., Palos Heights, IL

Directions : Parking lot entrance is on the west side of Central Ave., north of 135th St. From the parking lot, proceed along the edge of the woods until you come to path leading into woods.

Owner: Forest Preserve District of Cook County

Habitat Description: Very nice woods, with small clear creek (Tinley Creek, a tributary to the Cal-Sag Channel) flowing through it.

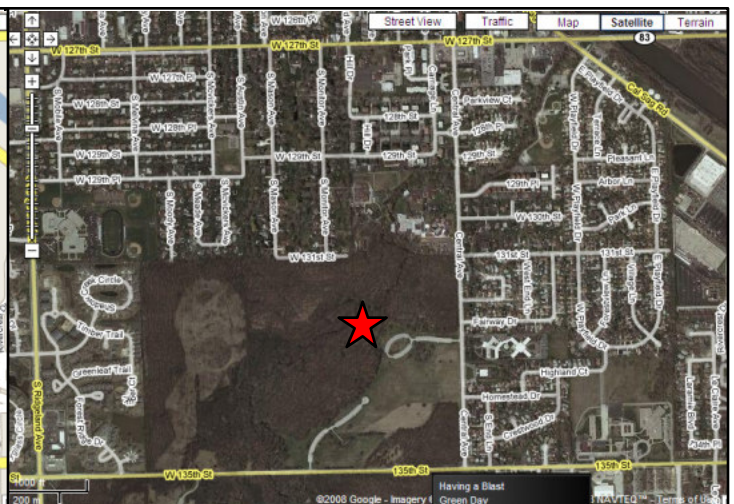
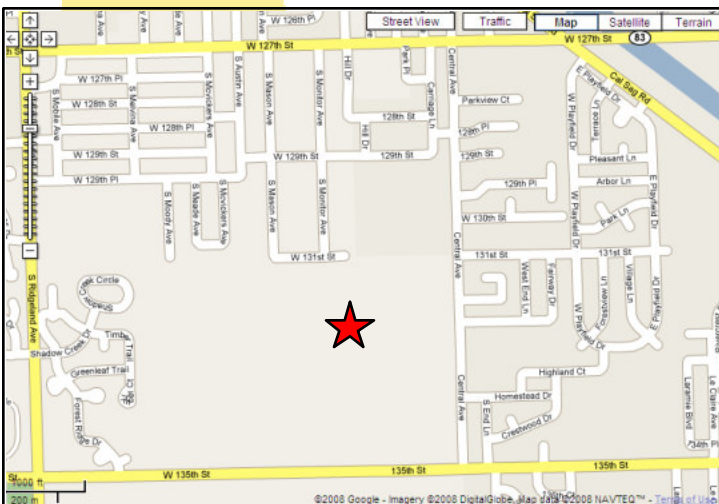


Access to water: Water is nearby, small creek has accessible banks and shallow water.

Amenities: Picnic benches and shelter, no bathrooms.

Parking: Parking lot

Capacity: 60 students

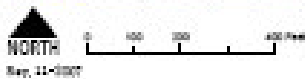
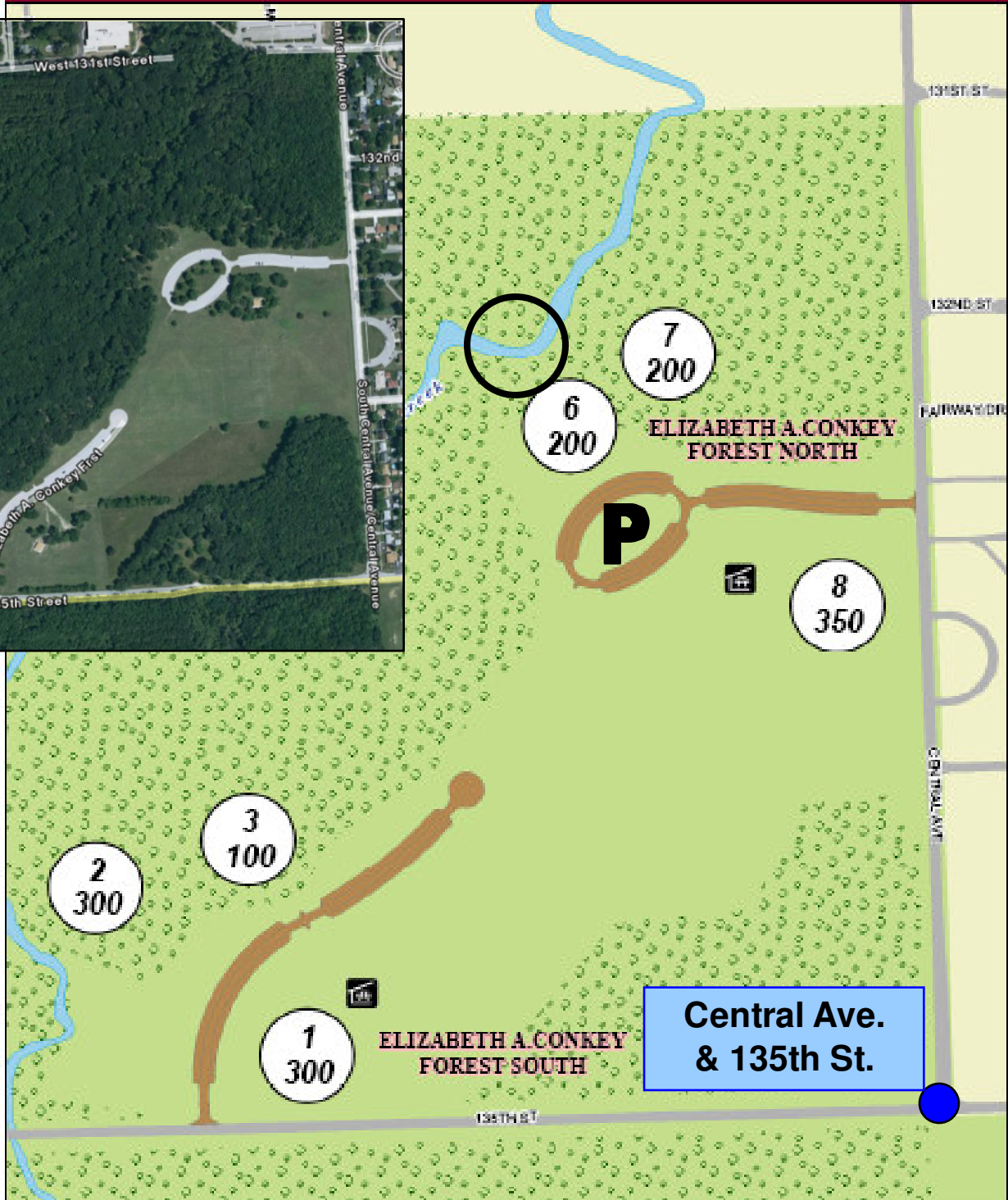
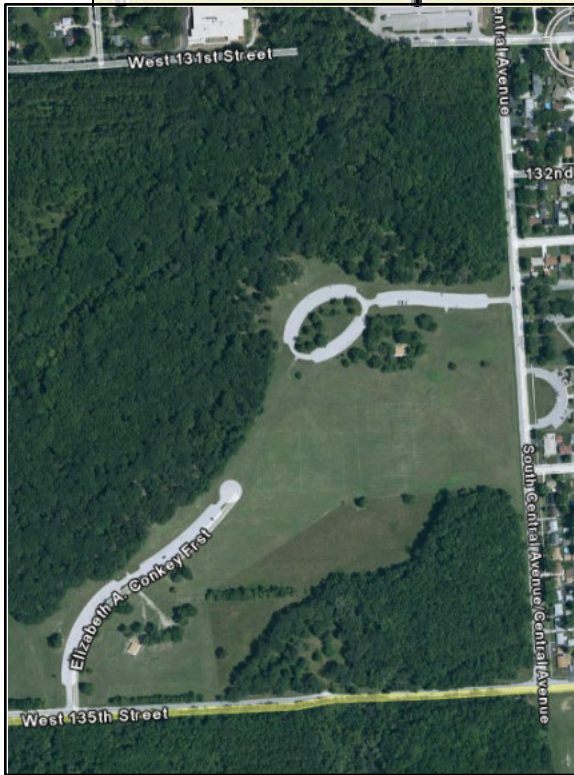




Picnic Groves

ELIZABETH A. CONKEY FOREST

TINLEY CREEK DIVISION



- Grove Number
 Capacity
- Shelter
 Parking
- Trees