

Harms Woods (Central)

North Branch of the Chicago River

Address or Nearest Intersection:

Harms Rd. south of Old Orchard Rd. and north of Golf Rd., Skokie, IL

Directions: The parking lot to use is off of Harms Rd., just under a quarter of a mile south of Old Orchard Rd. Go to back corner of parking lot and head left down bike path, turn off on dirt path and continue past oxbow to where the river goes left and right, about half a mile.

Owner: Forest Preserve District of Cook County

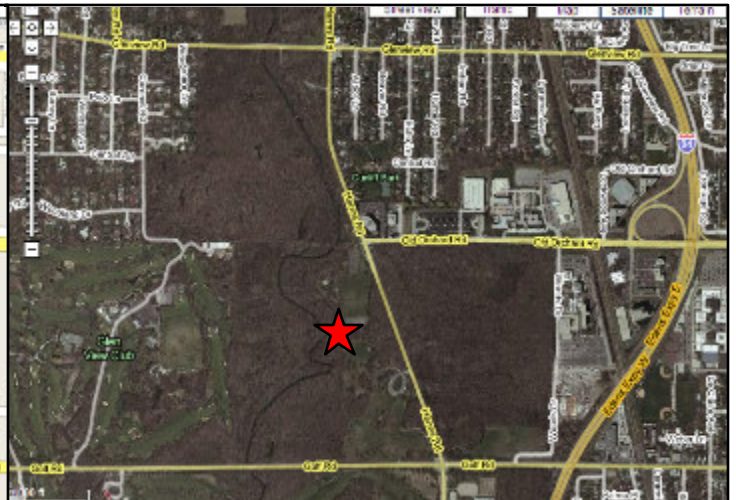
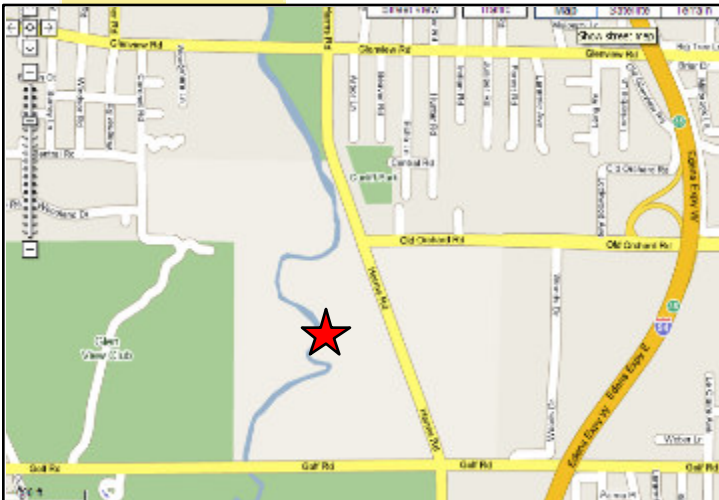
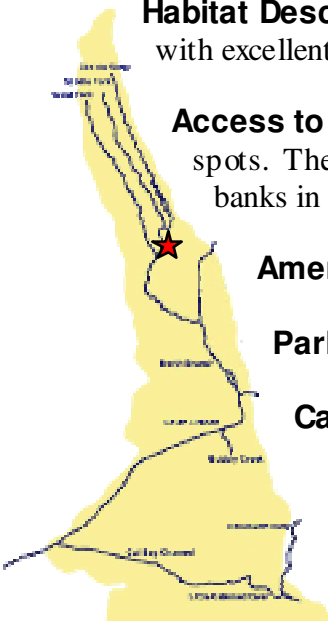
Habitat Description: Nice forested site, with excellent spring wildflowers.

Access to water: Access is okay in spots. The river tends to be quite deep, while the banks in many areas are quite steep.

Amenities: Picnic benches and shelters.

Parking: Parking lot

Capacity: 100 students





Picnic
Groves

HARMS WOODS

SKOKIE DIVISION

