

LaBagh Woods

North Branch of the Chicago River

Address or Nearest Intersection:
Cicero Ave. and Foster Ave., Chicago, IL

Directions : Entrance is on the east side of Cicero Ave. just north of Foster Ave. Once you cross over the Edens Expressway (I-94), take the first left and continue to the end of the parking lot. Walk towards the picnic shelter and look for path into forest and, take it down to the river.

Owner: Forest Preserve District of Cook County

Habitat Description: Fairly wide forested site, with many spring wildflowers. Frequent sightings of ducks, deer, and other wildlife. Good site for macroinvertebrate collection.

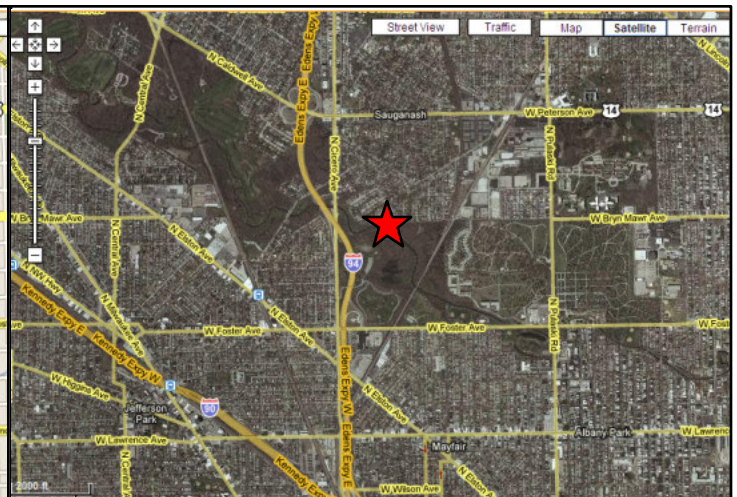
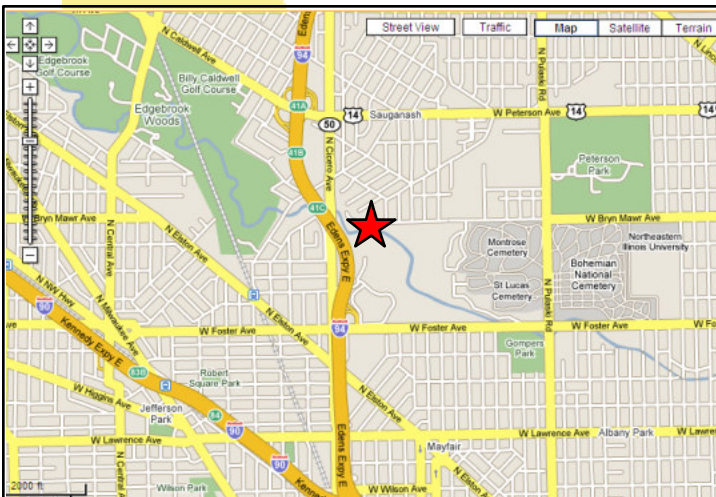
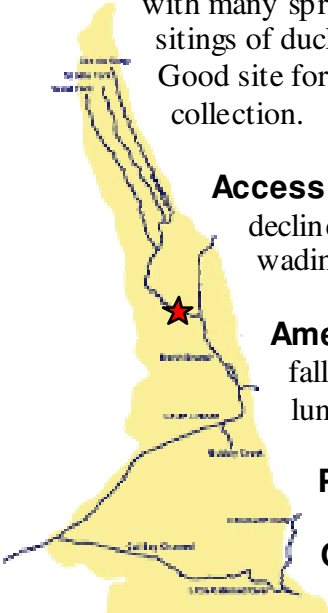


Access to water: Good access. Many entry points down small declines to water. Water near the edge is shallow and safe for wading. Water in the center of the river is often deep.

Amenities: Port-o-Potties available in spring, summer and fall. Shelter, picnic tables and a large expanse of lawn for lunch.

Parking: Parking lot

Capacity: 100 students





Picnic Groves

LABAGH WOODS NORTH BRANCH DIVISION



N. Cicero Ave. & W. Foster Ave.



- Grove Number
- Capacity
- Restroom
- Shelter
- Trees
- Parking