

Linne Woods

North Branch of the Chicago River

Address or Nearest Intersection:

Dempster St. and Ferris Ave.,
Morton Grove, IL.

Directions: Entrance is on north side of Dempster Ave. east of the railroad crossing at Lehigh Ave. From parking lot off of Dempster St. go to the back of the parking lot opposite last shelter and continue straight from parking lot, then go left on the path to the bridge across river.

Owner: Forest Preserve District of Cook County



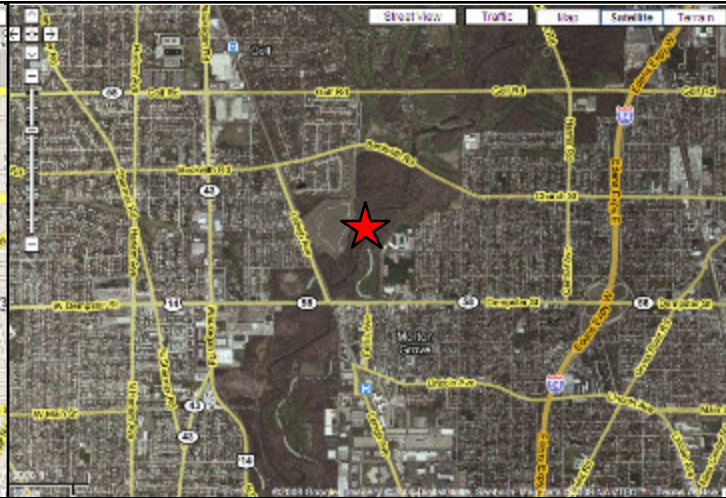
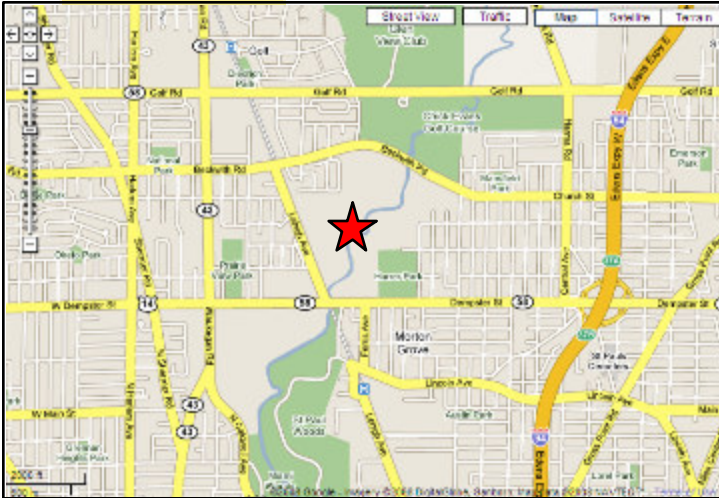
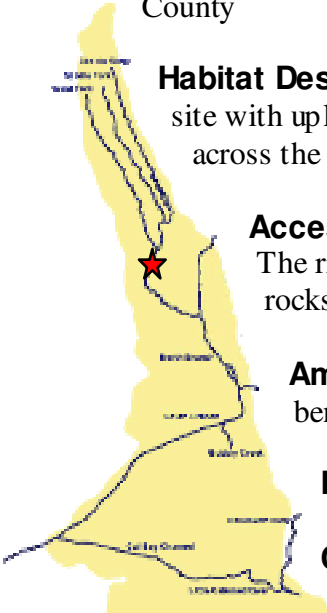
Habitat Description: Forested site with upland prairie restoration site across the river to the north.

Access to water: Access in good. The river is shallow with lots of rocks.

Amenities: Shelter and picnic benches, but no bathrooms.

Parking: Parking lot

Capacity: 100 students



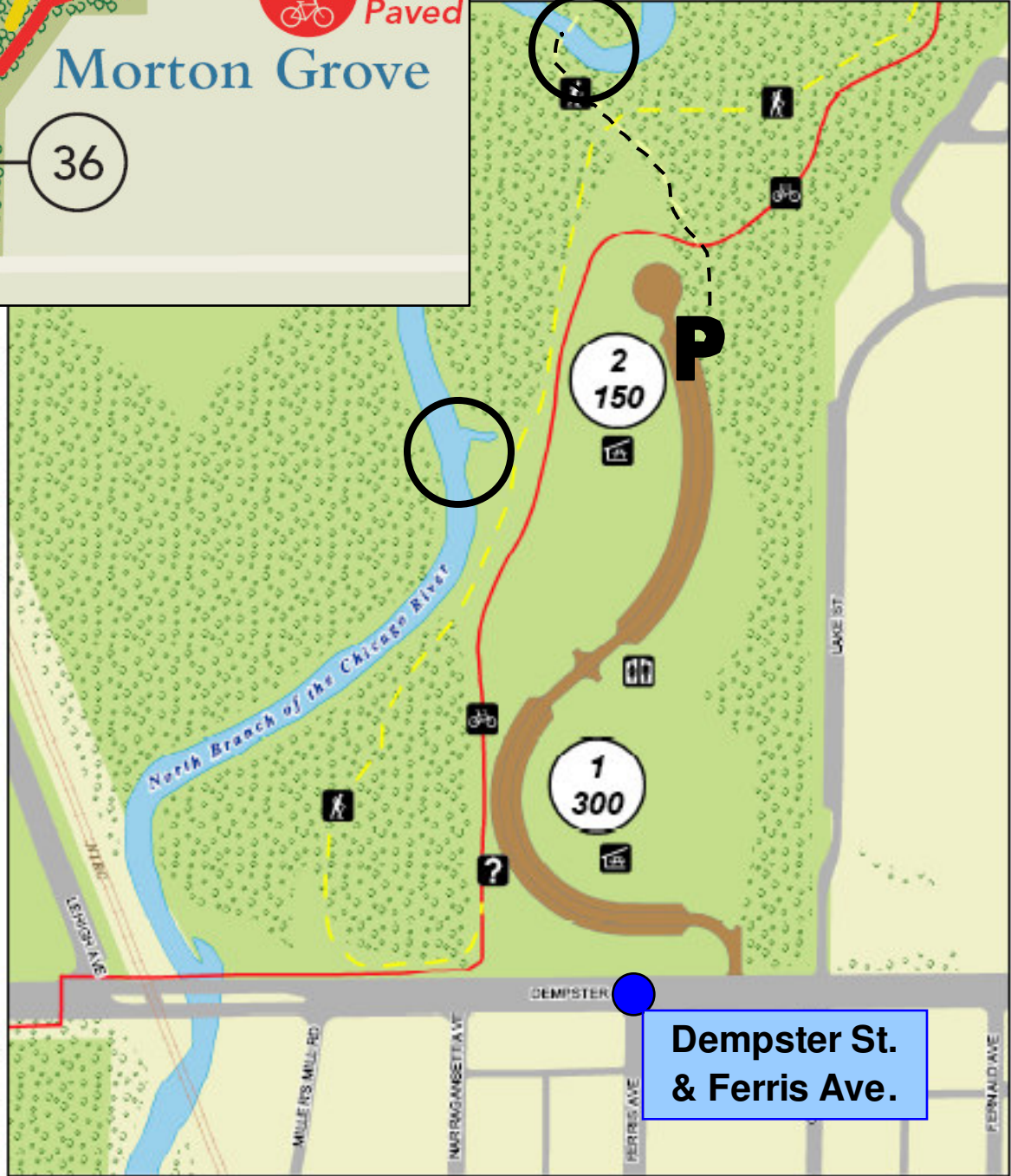
Friends of the Chicago River



Chicago River Schools Network



LINNE WOODS
NORTH BRANCH DIVISION



- NORTH
- 0 50 100 Feet
- Grove Number
- Capacity
- Restroom
- Shelter
- Unpaved Trail
- Paved Trail
- Trees
- Parking
- Information