

McClaghry Springs Woods

Mill Creek (flows to the Cal-Sag Channel)

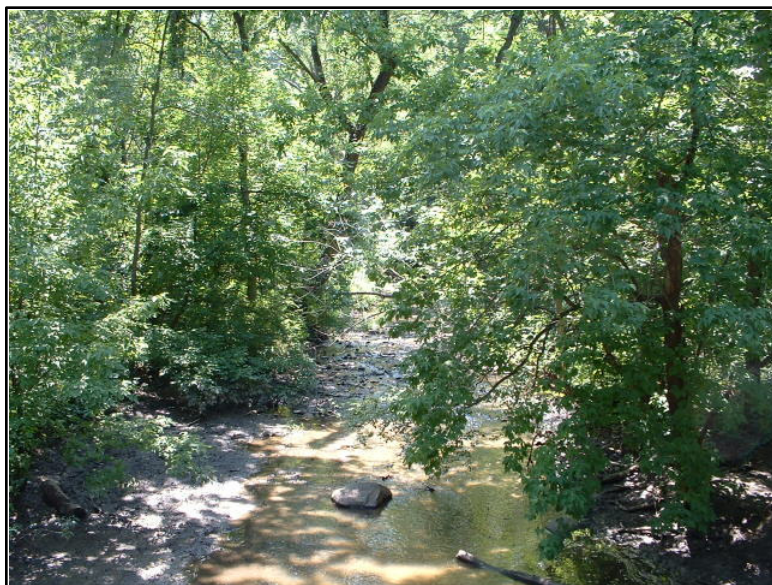
Address or Nearest Intersection:

S. Kean Rd. and W. 119th St., Palos Hills, IL.

Directions : From parking lot off of Kean Rd., Mill Creek is across the lawn next to the parking lot.

Owner: Forest Preserve District of Cook County

Habitat Description: Beautiful forested site. Part of the Palos moraine. Very large site with miles and miles of trails. Great for spring wildflowers. Contains Mill Creek which flows into the Cal-Sag Channel. Good diversity of macroinvertebrates.

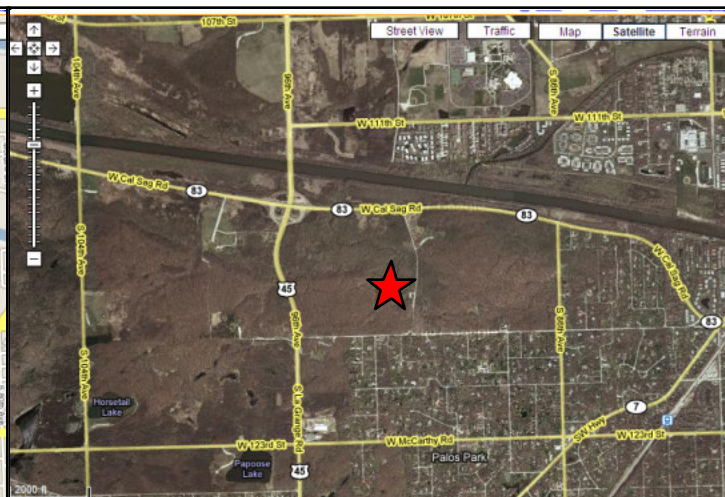
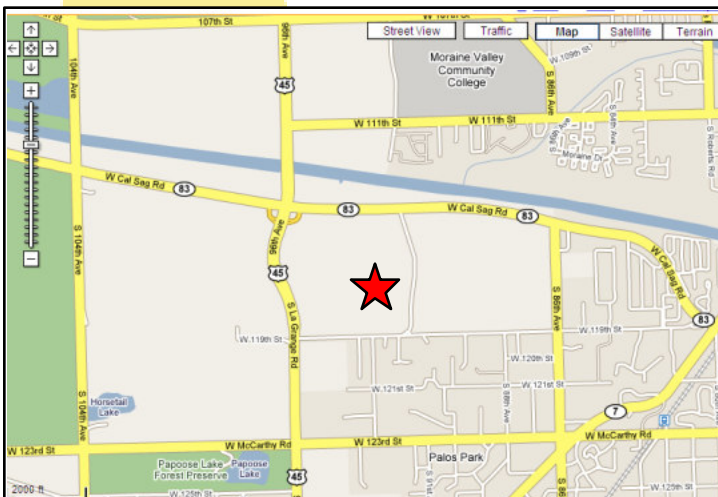
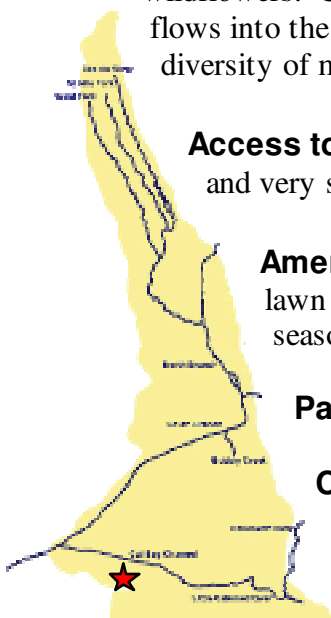


Access to water: Creek is small and very shallow with easy access.

Amenities: Port-a-potties available. Large lawn for lunch. Sometimes there are seasonally-placed picnic tables.

Parking: Parking lot

Capacity: 60 students





Picnic
Groves

McCLAUGHREY SPRINGS WOODS

SAG VALLEY DIVISION



W. 119th St. & S. Kean Rd.



1
000
Grove Number
Capacity

Parking
Trees

Unpaved Trail