

West River Park

North Branch of the Chicago River

Address or Nearest Intersection:

W. Argyle St. and N. Albany Ave., Chicago, IL.

Owner: Chicago Park District

Habitat Description: City park with trees and native plantings along river banks. Great site for bird watching, including the state endangered black-crowned night heron. The park is just to the south and west of where the North Shore Channel (to the north) joins the North Branch (to the west).

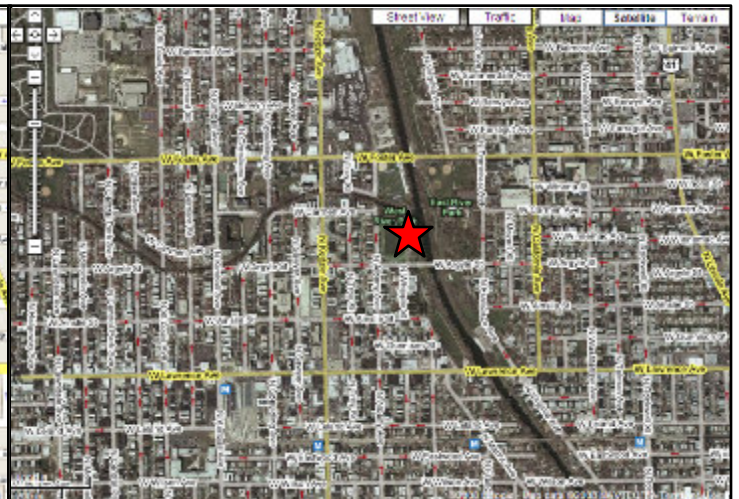
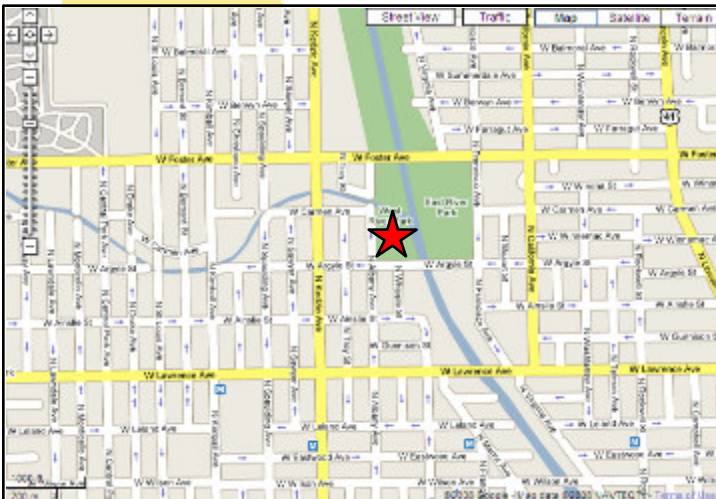
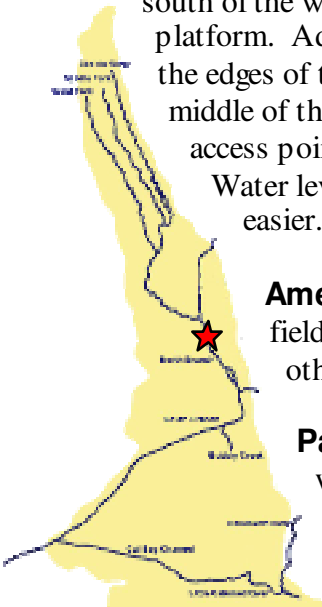
Access to water: On the west side of the river, south of the waterfall there is a concrete platform. Adults can access the water along the edges of the platform. Note: water in the middle of the river is VERY deep. Another access point is upstream of the waterfall on the south side of the river.

Water levels here are shallower, and access from the concrete walkway is easier. Testing both sites can offer an interesting comparison.

Amenities: Bathrooms are available, but far away. They are in the field house with is located on Francisco, just south of Foster on the other side of the river. A few benches and lawn.

Parking: Parking is usually available on Argyle St. Walk to the west side of the park.

Capacity: 60





N. Albany Ave.
& W. Argyle St.

P