

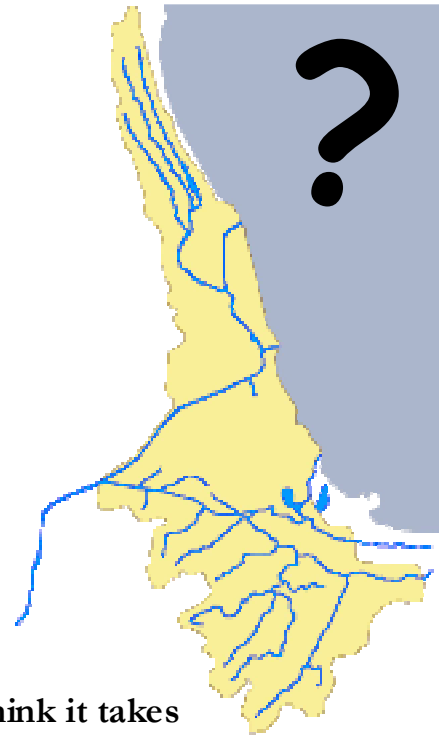
GETTING READY

WHAT IS YOUR WATERSHED ADDRESS?

Answers to Chicago River watershed questions:

What other watersheds does Chicago water pass through before it flows out of state?

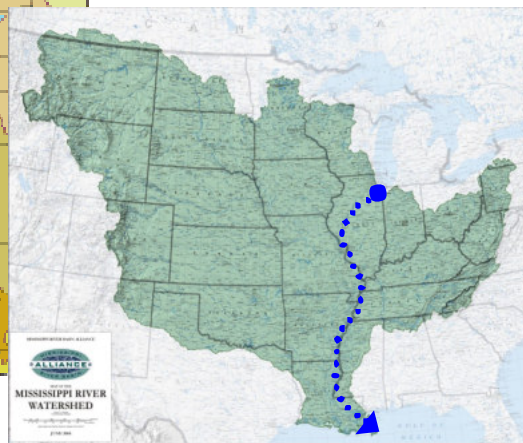
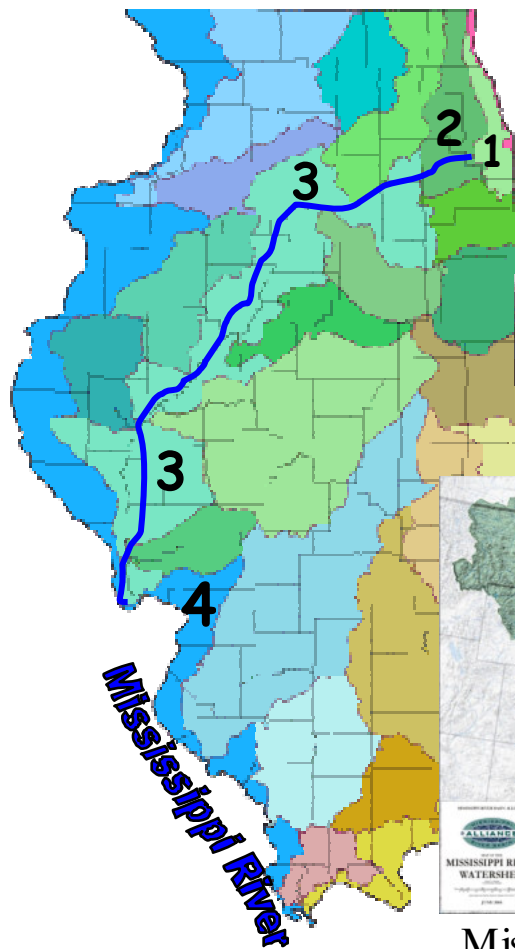
The Chicago River watershed (1 - light green) flows into the Des Plaines River watershed (2 - dark green), then into the Illinois River watershed (3 - green-blue), and finally into the Mississippi River watershed (4 - blue).



How long do you think it takes Chicago water to get to the Gulf of Mexico?

- 27 hours on the Chicago River
(35 miles ÷ 1.3 mph)
- 6 hours on the Des Plaines River
(17 miles ÷ 3.0 mph)
- 109 hours on the Illinois River
(273 miles ÷ 2.5 mph)
- + 500 hours on the Mississippi River
(1,250 miles ÷ 2.5 mph)

approximately* 642 hours or 26.75 days



Mississippi River watershed

* The rate of flow in a river is dependant on many factors, such as local precipitation, depth and width of the local channel, changes in elevation, riverbed characteristics, and the number of tributaries feeding the main channel. The velocities of the segments of the watercourse described above are averages - The actual rivers' speed is extremely variable.

Friends of the Chicago River